

# THE HARDY GROUP

## WEEKLY PROGRESS REPORT



**Project:** Kauai Beach Villas, Project Reoccupy – Bldgs G & H

**Address:** 4330 Kauai Beach Drive, Lihue, HI 96766

**Week Ending:** December 6, 2025

**Prepared by:** Alan Levy



### Highlights

- Concrete and PT demolition and repair at Bldg G continued

### Key Logistics

#### Work hours –

- Low noise –
  - 8:00 am to 5:30 pm Monday through Thursday
  - 8:00 am to 12:00 noon Fridays
- Loud noise - 9:00 am to 5:00 pm only

### Average Daily Work Force

**Seal Masters of Hawaii** – average 2 workers

**Simmons Steel** – 2 workers on Monday and Tuesday

**Incidents This Week:** None

### Key Meetings & Visits This Week

- Daily construction meetings and OAC Meeting

- JHG on site 12/1 – 12/2 and 12/4 – 12/5
  - Oversight and documentation of work

## Description of Work

- Form and pour lanai edges and slab openings
- Install new rebar and treat existing rebar that remains
- Patch PT cable end caps
- Tension new/repaired PT cables
- Install temporary lock-offs for PT cable repairs
- Demolish lanai edges and openings for temporary lock-offs

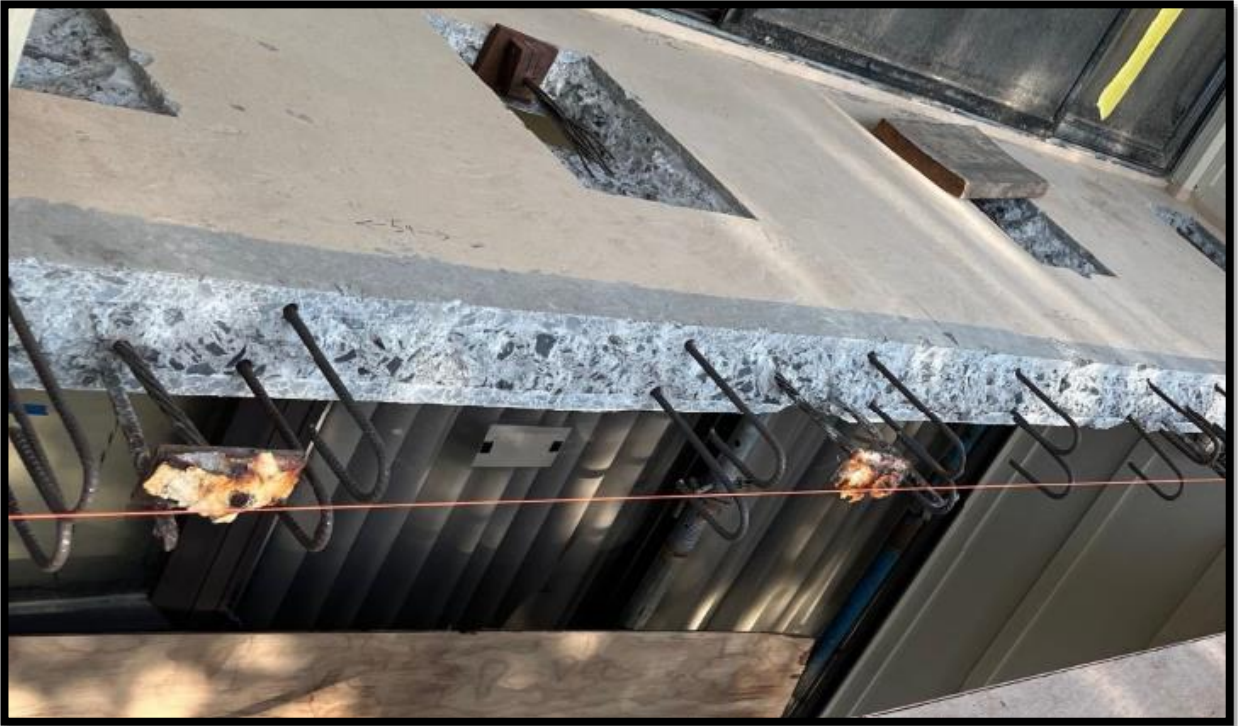
## Progress Photos

- Patched lanai edge and slab openings





- New rebar J-hooks at lanai edge



- Cable end caps patched and column repairs at G4 lanai



- Temporary lock-offs for cable end repair



- Demo openings for temporary lock-offs

